

Waipapa
Taumata Rau
**University
of Auckland**

IDEA

Impact of **D**ementia mate wareware
and solutions for **E**quity in **A**otearoa



IDEA Programme

Impact of **D**ementia mate wareware
and solutions for **E**quity in **A**otearoa



May 2025



Xiaojing Sharon Wu PhD NZRD
School of Population Health

85+

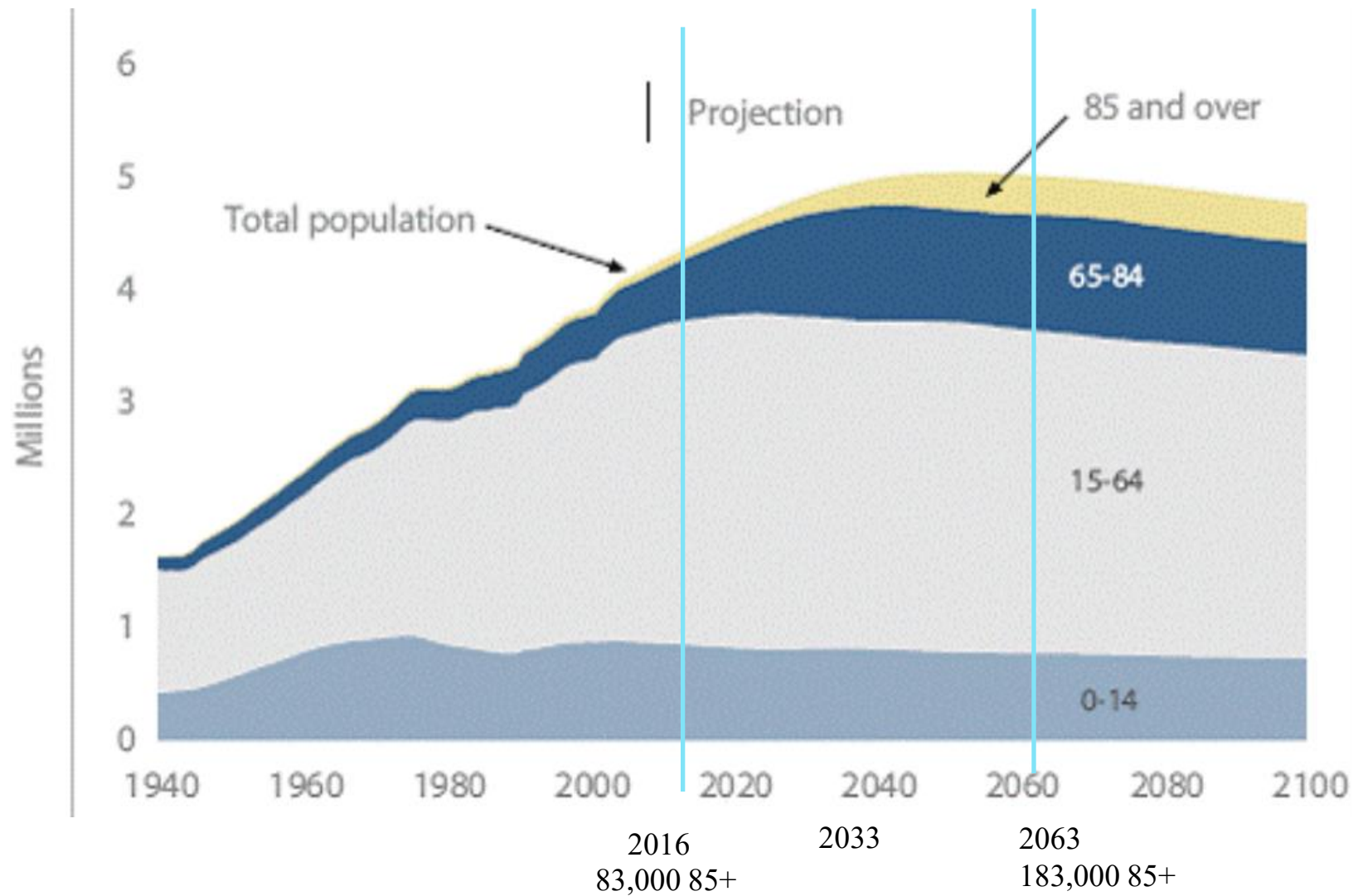


Table 6

Age (five-year groups to 90 years and over)

For the census usually resident population count

2013, 2018, and 2023 Censuses

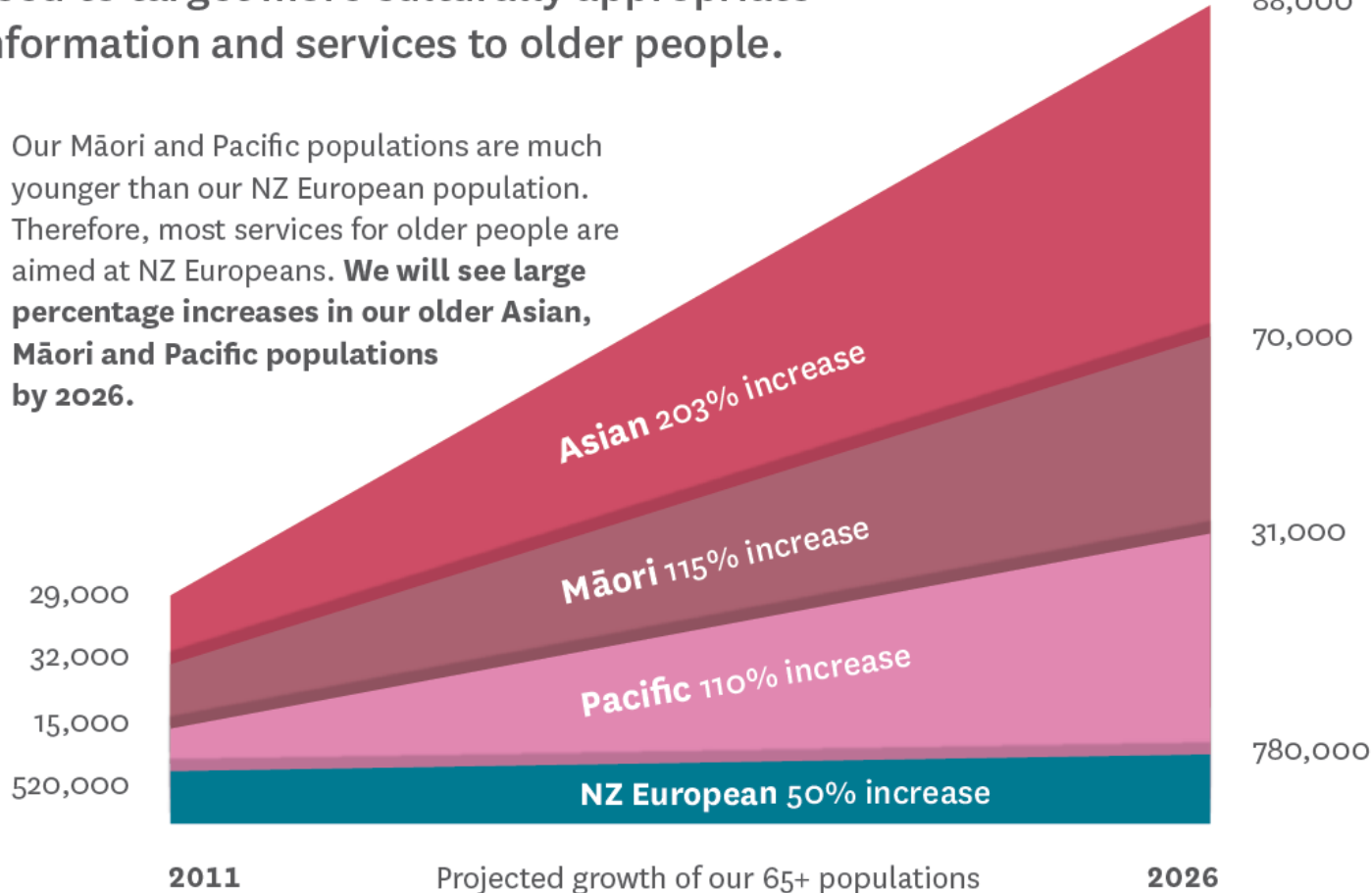
Age (five-year groups to 90 years and over)	Census usually resident population count			Increase or decrease 2013–18		Increase or decrease 2018–23	
	2013	2018	2023	Number	Percent	Number	Percent
0–4	292,044	294,921	288,387	2,877	1.0	-6,534	-2.2
5–9	286,758	322,635	311,736	35,877	12.5	-10,899	-3.4
10–14	286,830	305,847	336,174	19,017	6.6	30,327	9.9
15–19	295,755	301,824	320,637	6,069	2.1	18,813	6.2
20–24	290,691	317,403	311,952	26,712	9.2	-5,451	-1.7
25–29	258,135	344,463	335,715	86,328	33.4	-8,748	-2.5
30–34	256,554	317,037	374,079	60,483	23.6	57,042	18.0
35–39	267,516	295,395	345,537	27,879	10.4	50,142	17.0
40–44	305,754	291,348	315,765	-14,406	-4.7	24,417	8.4
45–49	301,638	321,483	302,220	19,845	6.6	-19,263	-6.0
50–54	299,994	308,592	322,635	8,598	2.9	14,043	4.6
55–59	260,184	302,745	304,074	42,561	16.4	1,329	0.4
60–64	233,163	260,901	296,418	27,738	11.9	35,517	13.6
65–69	196,020	229,032	252,492	33,012	16.8	23,460	10.2
70–74	150,114	183,633	213,438	33,519	22.3	29,805	16.2
75–79	106,557	132,792	163,632	26,235	24.6	30,840	23.2
80–84	81,027	85,362	107,991	4,335	5.4	22,629	26.5
85–89	49,026	53,979	57,939	4,953	10.1	3,960	7.3
90+	24,291	30,372	33,093	6,081	25.0	2,721	9.0
Total	4,242,048	4,699,755	4,993,923	457,707	10.8	294,168	6.3
Median age (years)	38.0	37.4	38.1	---	---	---	---

Note: Age is rated as very high quality.

Diversity of older people

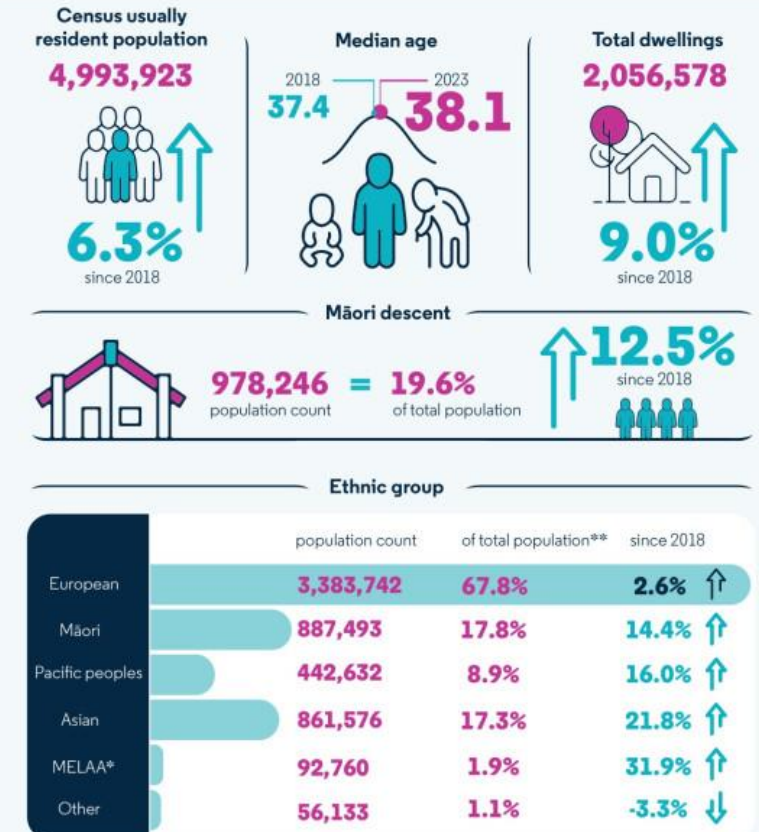
Our older population is becoming more culturally diverse, and organisations will need to target more culturally appropriate information and services to older people.

- Our Māori and Pacific populations are much younger than our NZ European population. Therefore, most services for older people are aimed at NZ Europeans. **We will see large percentage increases in our older Asian, Māori and Pacific populations by 2026.**



Source: Statistics New Zealand population projections

2023 Census national data

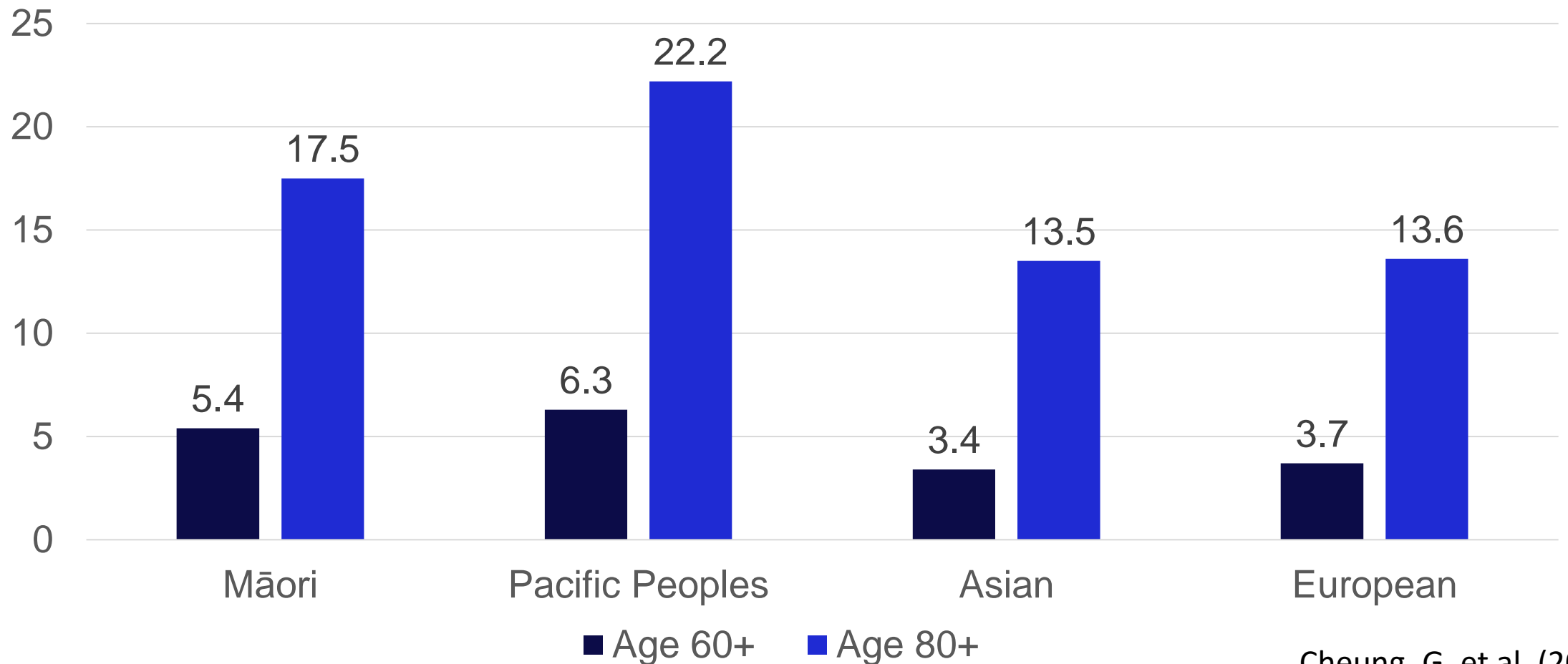


*Middle Eastern/Latin American/African

**People may belong to more than one ethnic group

Census | Stats

2019-20 age-sex standardised dementia prevalence by ethnicity (%) using routinely collected health data

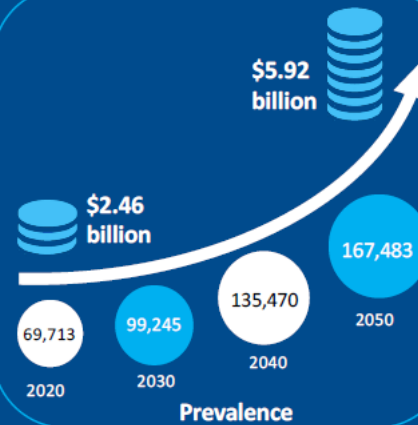


Cheung, G. et al. (2022)

Dementia in Aotearoa NZ

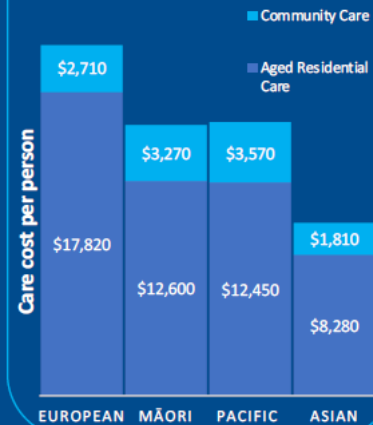
Dementia: a rapidly growing problem for Aotearoa NZ

September 2021



Carers provide **52.7 million** hours of unpaid care **Valued at \$1.19 billion** per year

There is **inequity** in dementia care across Aotearoa NZ ethnic groups



One in four people will die with dementia



Dementia is increasing **faster** in Māori, Pacific, and Asian peoples

Priority Areas

- Research on the true rates of dementia in Aotearoa NZ
- Culturally appropriate care that maximises quality of life
- A National Dementia Plan for Aotearoa NZ

Ma'u E, Cullum S, et al. Dementia Economic Impact Report 2020.



The Challenge of Dementia in NZ Aotearoa

Aging Population

Cases projected to triple in 30 years

Data Limitations

Current estimates rely on overseas data

Diversity Gap

Lack accuracy for NZ's diverse population

Equity Focus

Need true prevalence across ethnic groups



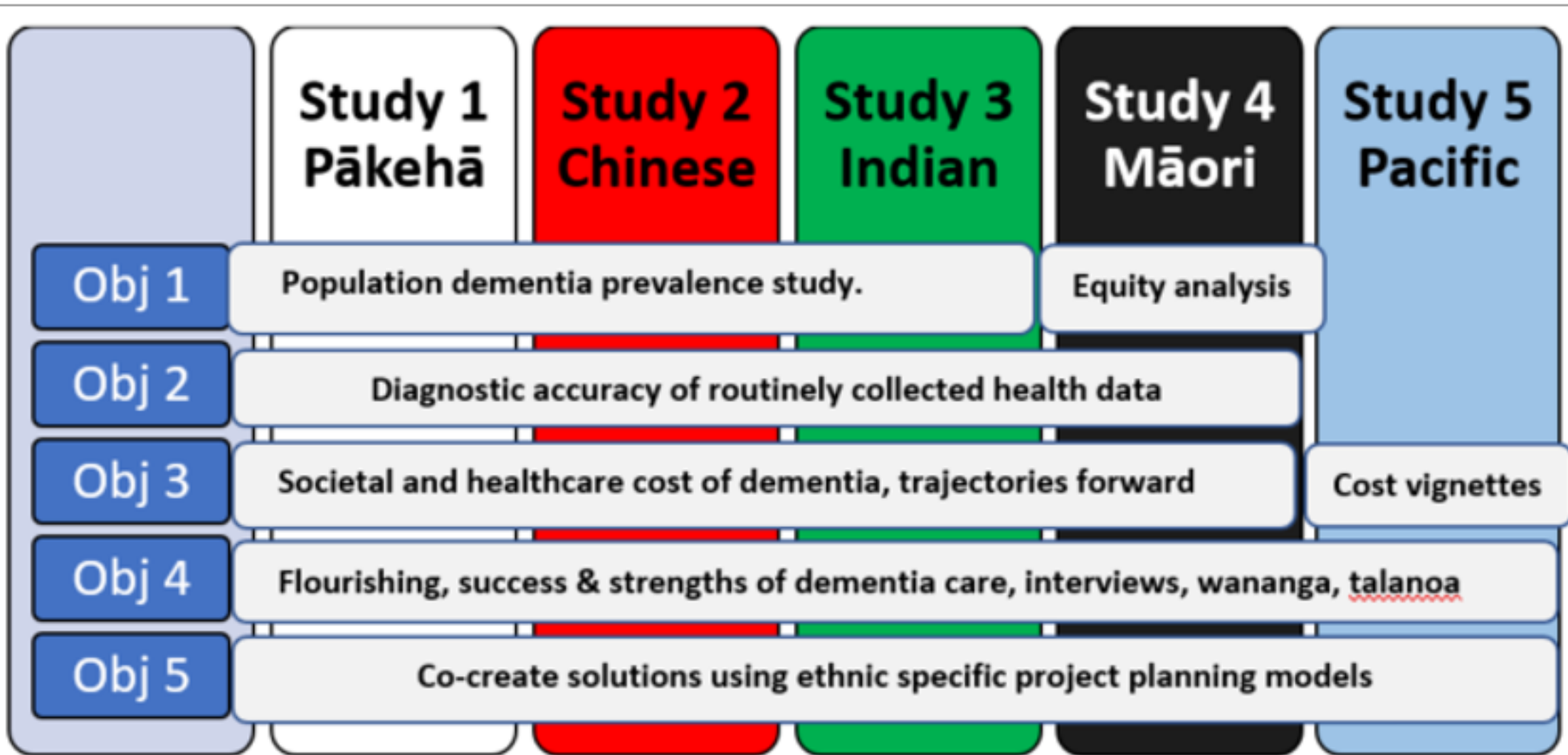
“Dementia is becoming a global public health priority, but for us to understand the scale of the issue here in New Zealand, we urgently need to have our own data.”

DR SARAH CULLUM



IDEA: Aims

1. Establish the true current and future prevalence of dementia in NZ, & disparities
2. Establish the *accuracy* of dementia evidence in NZ routinely collected health data
3. Evaluate the social and economic impacts of dementia
4. Understand the strengths and successes in care across NZ
5. Use co-design methods to immediately improve models of care
 - COMMUNITY-BASED, REPRESENTATIVE, CO-CREATED



Prevalence Study



Study Design

Cross-sectional screen-interview survey

Adults 65 years and older

Location Approach

Door-knocking in random urban/rural meshblocks

Auckland and Christchurch regions

Process

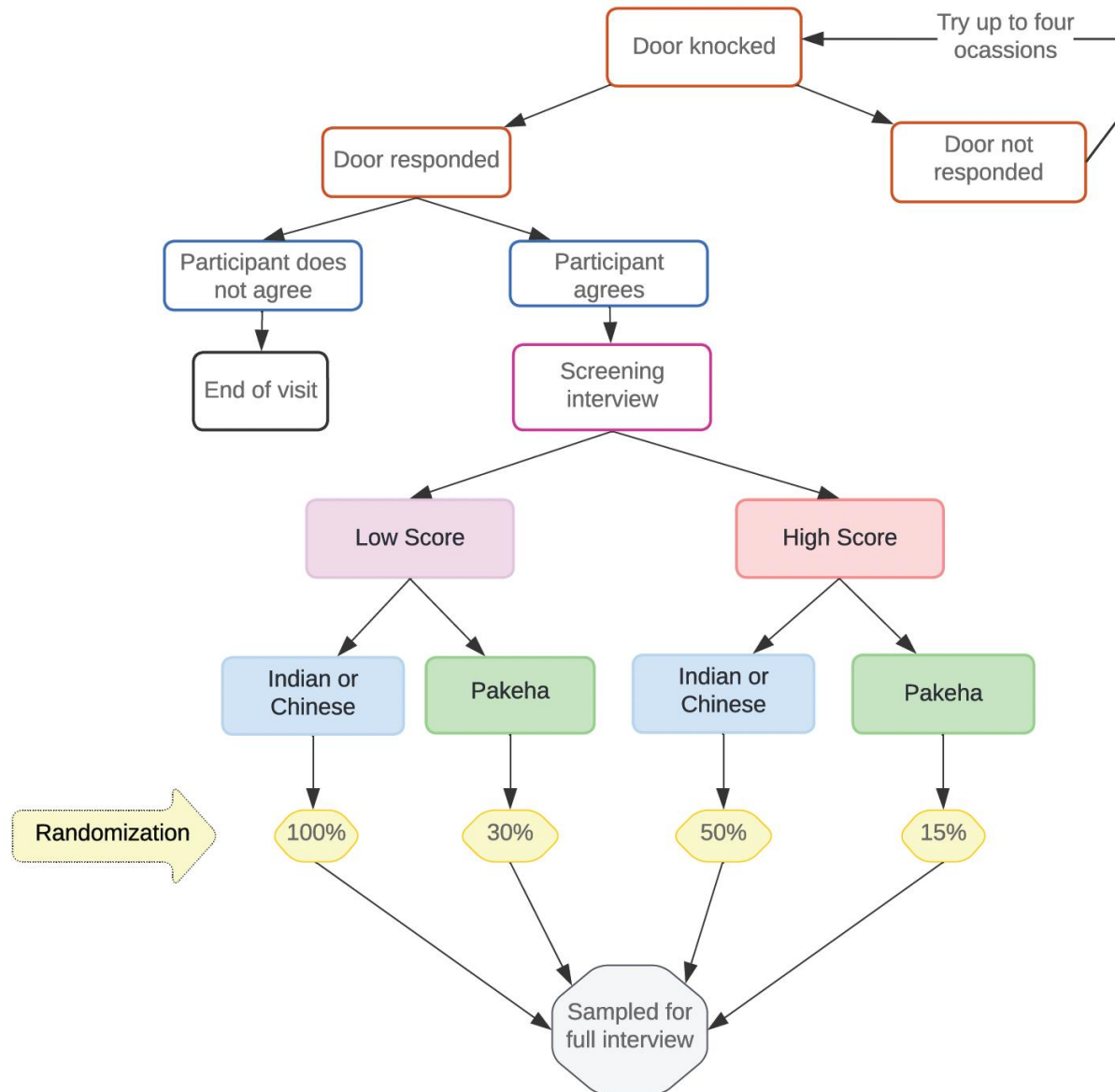
Multilingual interviewers conduct screenings

Random sample for 10/66 dementia protocol

Sample Size

485 Pākehā, 410 Chinese, 425 Indian

3% margin of error



Now I am going to tell you three words, and I would like you to repeat them after me. “Boat, House, Fish”

1. (Interviewer points to their elbow) What do we call this?
2. What do you do with a hammer?
3. Where is the local market/store?
4. What day of the week is it?
5. What is the season?
6. Please point first to the window and then to the door?
7. Do you remember the three words I told you a few minutes ago?

Score out of 9

0–4 Probable dementia
5–6 Possible dementia
7–9 Normal

Dementia head count goes door to door

From **Nine To Noon**, 9:05 am on 22 March 2024

Share this [Twitter](#) [Facebook](#) [Email](#) [Reddit](#) [LinkedIn](#)

Listen 20'55"

[Add to playlist](#) | [Download](#)





Current Progress (April 2024 – May 2025)

3,306

Participants Screened

Door-to-door approach

750

Interviews Completed

Detailed 10/66 assessments

48
weeks

28%

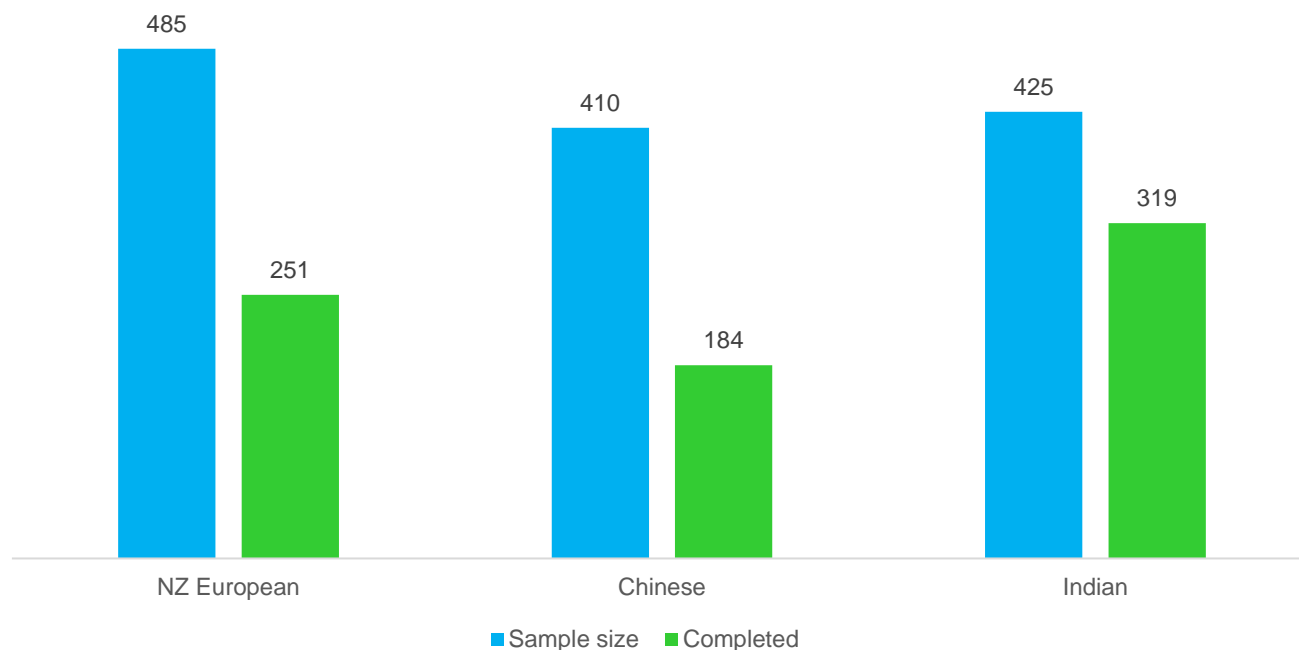
Interview Decline Rate

Post-screening refusals

34%

Screening Refusal Rate

Initial approach challenges





Preliminary Insights

Prevalence Patterns

Early data hints at disparities across ethnic groups

Higher screening positivity in some communities

Cultural Considerations

Care arrangement variations

Perception of cognitive decline differs culturally

Engagement Experience

Door-knocking challenges

Bilingual interviewers improve participation

The IDEA Team

University of Auckland: Ngaire Kerse, Sarah Cullum, Gary Cheung, Etu Ma'u, Claudia Rivera-Rodriguez, Joanna Hikaka, Amy Chan, Fiva Fa'alau, Braden Te Ao, Emme Chacko, Susan Yates, Lynette Tippet, Sharon Wu

Auckland University of Technology: Rita Krishnamurthi, Nick Garrett

Health New Zealand: Oliver Menzies, Jackie Broadbent

Xiaojing.wu@auckland.ac.nz

